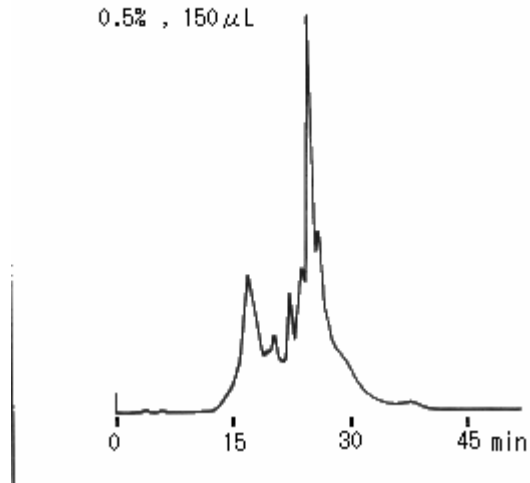


Crude albumin(chicken egg)
0.5% , 150 μ L



Column : Shodex IEC QA-825 (8.0mmID*75mm)
Eluent : (A); 20mM Tris-HCl buffer(pH8.5)
(B); (A) + 0.5M NaCl
Linear gradient: 0min to 60min, (A) to (B)
Flow rate : 1.0mL/min
Detector : UV(280nm)
Column temp. : 25°C